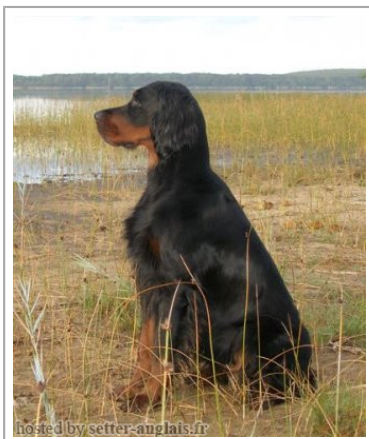







**MERLIN'S JOLIE OF GORDON**

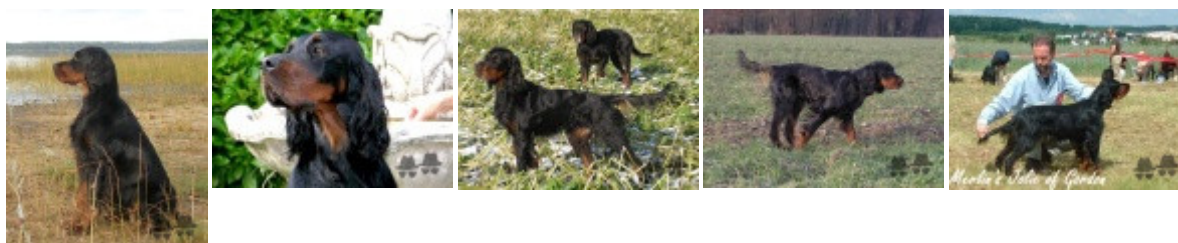
(F)  
Dyspl. : A



hosted by setter-anglais.fr

|   |   |   |   |
|---|---|---|---|
| Père<br><b>BLACK MYSTERY CHINOOK</b><br>1999-08-17 (M)<br>SHSB581679<br>(CHIB CHDE.B) HD-A<br> | <b>SUNDOWNER'S JUSTIN</b> 1996-04-23<br>(M) DPSZS.G.000109 (CHAMPION<br>-CHDE.B)<br> | <b>CUNNINGHAM'S HIGHLANDER (M)</b><br>DGSZ91/031-SHSB001195 HD-A<br> |  <b>BLACK DEVIL'S QUASIMODO (M)</b><br>VDH/DPSZ33/87 (CHIT<br>CHDE.T) HD-A |
|   | <b>BLACKBERRY SHEELA (F)</b><br>SHSBSG000347 HD-B   | <b>SUNDOWNER'S BESS</b> 1988-11-03<br>(F) DGSZ88/0310366 HD-B<br>    | <b>ANKE VON CATENHORN (F)</b><br>VDH86/0310203 (CH.ALL, VDH-CH)   |
| Mère<br><b>MERLIN'S EMILY OF GORDON</b><br>(F)<br>HD-A  | <b>BLACK DEVIL'S GATSBY (M) HD-A</b>  | inconnu   | inconnu   |
|   | <b>MERLIN'S BORA OF GORDON (F)</b><br>HD-A  | inconnu   | inconnu   |
|   |   | inconnu   | inconnu   |
|   | inconnu   | inconnu   | inconnu   |
|   | inconnu   | inconnu   | inconnu   |
|   | inconnu   | inconnu   | inconnu   |
| inconnu   | inconnu   | inconnu   |   |

HD A1  
Sang italien (estimation) : 1 %  
Estimation des points au pédigrée : 12



Note : les données ne sont pas garanties. Elles ont été entrées par les membres sans garantie d'exactitude.

