





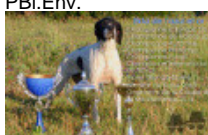





UPSSO DU CLOS DES HUSSARDS

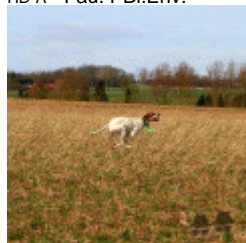
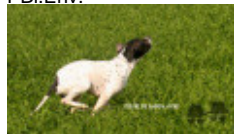
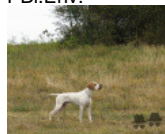
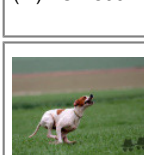
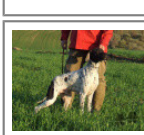
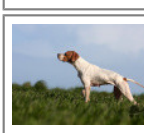
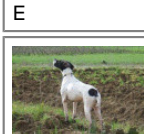
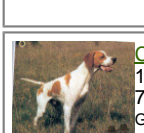
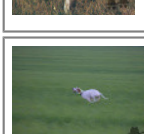
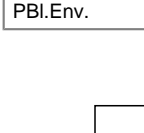
2023-05-05 (M) LOF 115799

Couleur : Noi. PBI.Env.

[fiche affixe](#)

<p>Père O'CLOCK DU GOUYRE 2018-06-19 (M) LOF 110165 HD-A - Noi. PBI.Env.</p>	<p>LUCANIAE ISACCO 2012-07-15 (M) LOI LO12111840 - BIANCO NERO, MASCHERA SIMMETRICA</p> 	<p>INNO DELLA CISA 2005-10-20 (M) LOI LO0680987 (CH P) - BIANCO ARANCIO MASCHERA CRANIO F</p> 	<p>FIANO DEL VOLTURNO 1992-06-30 (M) LOI - BIANCO ARANCIO</p>
		<p>LUCANIAE ZENDA 2008-06-30 (F) LOI LO0959652 (Camp. Ripr.) - BIANCO NERO TESTA DI MORO MACCHI</p>	<p>GLASTIDIUM VINK 2003-04-20 (M) LOI LO0390654 - BIANCO ARANCIO STELLA IN FRONTE</p> 
	<p>IKTA DE L'AZUR ET OR 2013-09-04 (F) LOF 104821/20040 (TR, CHGQ, CH GT) - Noi. PBI.Env.</p> 	<p>DEMON DES PLAINES DE PICARDIE 2008-10-17 (M) LOF 97964/15215 (TRGQ, TR, CH GQ, VVOF/FTA, CH GT, CH IGQ, CH IT) - Noi. PBI.TLi.</p> 	<p>ZEFIRO SIRTOUE 2007-05-21 (M) LOF 97683/14857 - Noi. PBI.Env.</p> 
		<p>EKTA DE L'AZUR ET OR 2009-03-28 (F) LOF 98299/18365 (TR, CH A, TRGQ, VOF/FTP, CH T, CH P, CHIT, CHR) - Noi. PBI.Env.</p> 	<p>VENDA DES BUVEURS D'AIR 2004-06-01 (F) LOF 91133/16711 (TR) - Noi. PBI.Env.</p> 
			<p>ALBATOR 2005-07-15 (M) LOF 93353/14127 (TRGQ) - Fau. PBI.Env.</p> 
			<p>UNDJI DU MONT AGEL 2003-06-18 (F) LOF 89465/16407 (TR) - Noi. PBI.Env.</p> 

Mère

NAYA DU CLOS DES HUSSARDS2017-08-14 (F)
LOF 109492 HD-A
- Fau. PBI.Env.GIRO DE LANDA-GORI 2011-05-30
(M) LOF 101901/15805 (TRGQ, CH GQ)
- Noi. PBI.Env.JZARA DES GRANDES RAFALES
2014-10-10 (F) LOF 106071/20223
HD-A - Fau. PBI.Env.C'XABAL DE LANDA-GORI
2007-06-05 (M) LOF 95789/14848 (TR,
CH P, CHIT, TRGQ, CHR QC) HD-A - Fau.
PBI.Env.D'JORI DE LANDA-GORI 2008-06-03
(F) LOF 97561/18026 (TR) HD-A - Noi.
PBI.Env.ARISTANI'S KANDAR 2008-10-07 (M)
LOF 99670/15204 (TRGQ, CH GQ) - Fau.
PBI.Env.COMETE DES GRANDES RAFALES
2007-06-10 (F) LOF 95609/17676 (TR)
- Fau. PBI.Env.UTO DE COUCAREILLE 2003-03-31
(M) LOF 89922/14244 - Mar. PBI.Env.TXERA DE
LANDA-GORI
2002-08-15 (F) LOF
88475/16325 (TR) HD-A
- Fau. PBI.Env.KASTER 2004-06-07
(M) LOI 04107914
(CH(IT)T) - BIANCO
NERO TESTA NERA
TRONCO PUARGITXU DE
LANDA-GORI
2005-08-06 (F) LOF
93191/17034 - Fau.
PBI.Env.TITAN 2001-07-15 (M)
LOI LO01166881 (CH
GQ, CH(IT)T) - BIANCO
ARANCIO
MASCHERA CHIUSAPETITE 2002-01-08 (F)
LOI LO0231488 (Ch. Ital.
Lav., Camp. Ripr.) -
BIANCO NERO CON
TESTA NERA MACCHCATHARIUM NINO
1997-05-06 (M) LOF
79208/11398 (CH P, CH
GQ, TR) - Fau. PBI.Env.RAFALE DE
FONDJUAN
2000-07-22 (F) LOF
85280/16298 (CH A,
CH T, CH P, TR) - Fau.
PBI.Env.Puce : 250269591073922
Sang italien (estimation) : 74 %
Estimation des points au pédigrée : 30

Taux de consanguinité (estimation) : 2.2 %

RIBOT DELLA NOCE (5,6,6 X 5,5,6,6,7) : 0.013092
FAONA DES BUVEURS D'AIR (6,7,7,7,8 X 6,7,7,8,8) : 0.003296
IPPOCRATE DEL VENTO (7,7,7,8,8,8 X 7,7,8,8) : 0.000916
ESPERIA DEL VENTO (6,8,8,8,8,8 X 8,8,8,8) : 0.000854
FRAY DU RIOU DE LA CUVE (7,7,7 X 7,8,8) : 0.000671
HARDY DU BOIS DES PERCHES (8 X 5,6,6,7) : 0.000549
ASSO DEL VENTO (6,8,8,8 X 8,8) : 0.000366
FAUNO DEL VENTO (8,8,8,8 X 8,8,8,8) : 0.000305
TIBET DE LA LEMBAZ (8 X 6,7,7,8) : 0.000275
CLASTIDIUM MILTON (6,6,7 X 8) : 0.000244
MORENA DU BOIS DES PERCHES (6 X 7) : 0.000244
MIRCO DU BOIS D'ALDEBARAN (6 X 7) : 0.000244
MARCH DELLA CISA (8,8 X 7,8,8) : 0.000214
BINGO DE LA VALLEE DU FREMUR (7,8,8,8 X 7,8,8,8) : 0.000153
ASTRA DU VIVIER DU FIEUX (7,8,8,8 X 7,8,8,8) : 0.000153
VER DE PLAYABARRI (8 X 8,8,8) : 0.000061

Note : les données ne sont pas garanties. Elles ont été entrées par les membres sans garantie d'exactitude.

